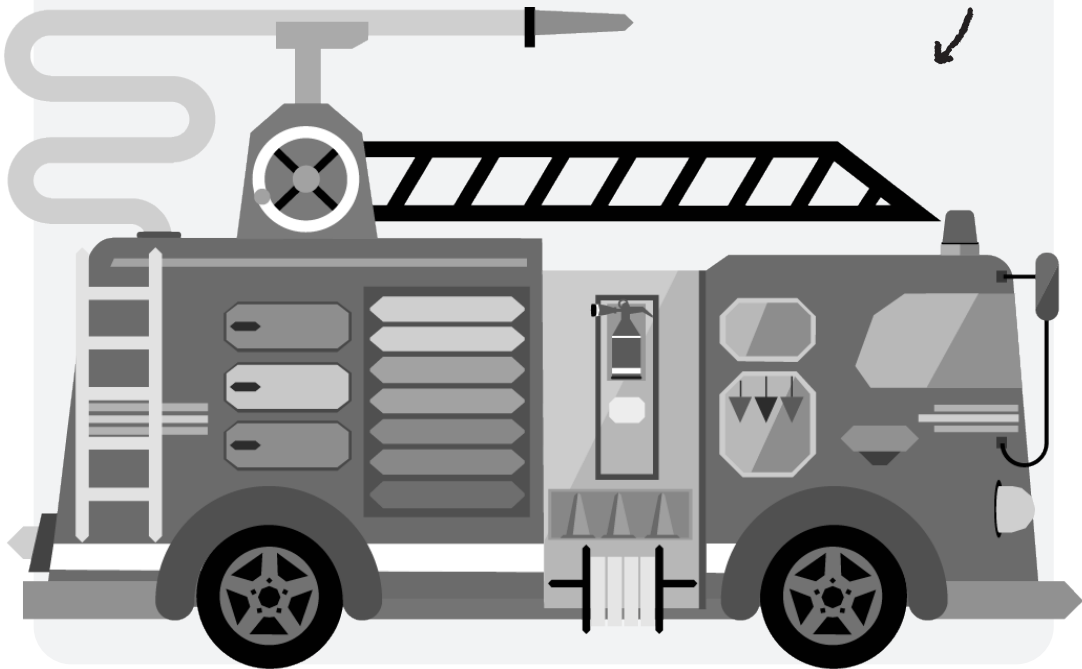




MARCOPOLO
World School

A Fire Engine is
driven by firefighters
to put out fires and
save the day!

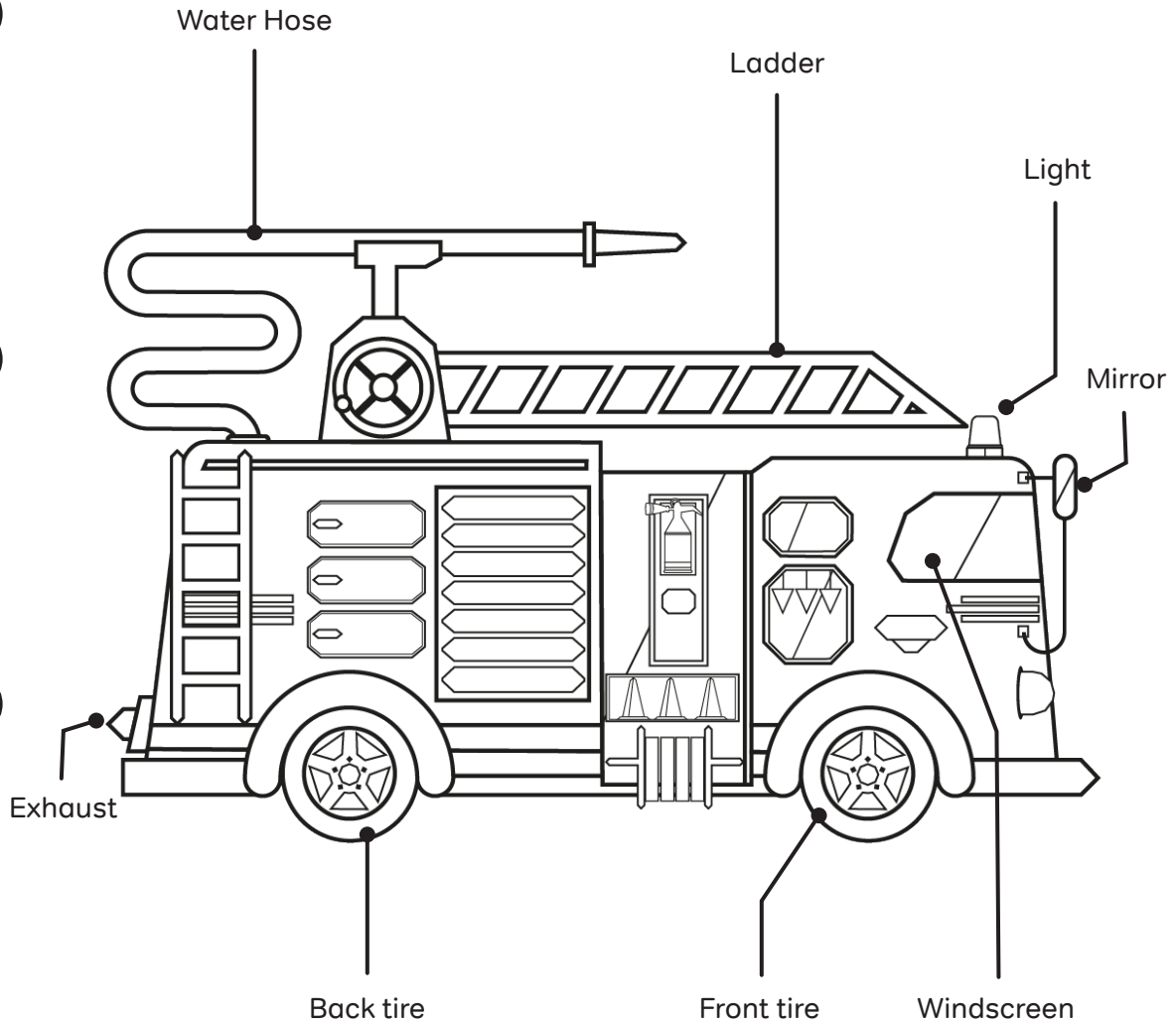


Fire Engine

Owner's Workshop Manual

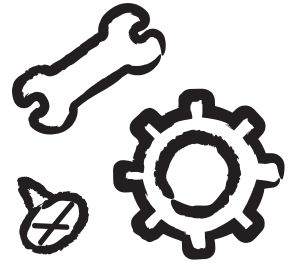
- A Fire Engine carries a lot of equipment
- Ladders help firefighters climb up high
- Water hoses are used to put out fires and keep them from spreading
- Fire axes burst open doors or walls so firefighters can quickly help
- Firefighters wear special clothes, hats and masks for protection
from flames and smoke

Fire Engine Information



Use your favorite colors to decorate the Fire Engine!

Fire Engine Design Challenge



A Fire Engine brings firefighters to help in many types of emergencies.

What you need to do...

Grab some water squirters and test the differences in how far they spray! Some examples are: garden hose, a spray bottle and a bath toy.

Which one would be the best tool for a firefighter? Use the next page to record your findings...



Things to think about:

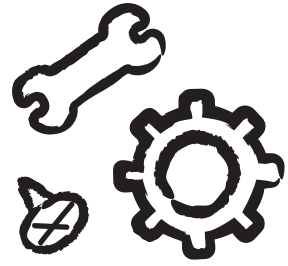


Make a prediction before testing your squirters: Which one do you think will squirt the farthest?

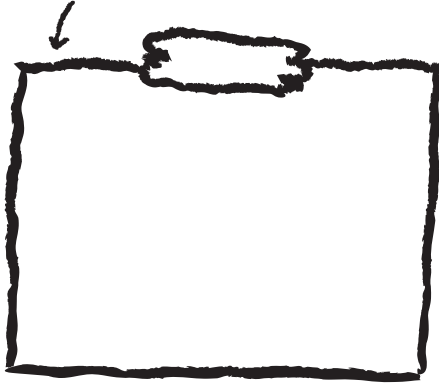


How will you compare the distances of the different squirters?

Fire Engine Design Challenge



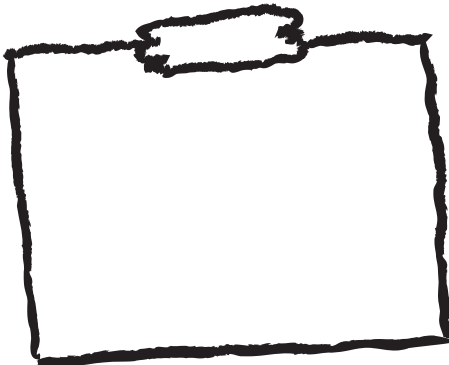
Draw each water squirter here!



TEST ONE

- Water squirt distance:

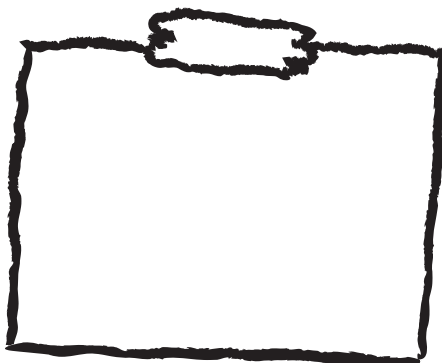
.....



TEST TWO

- Water squirt distance:

.....



TEST THREE

- Water squirt distance:

.....

! The best water squirter is... !
.....